

## CONTENTS

<b>CONTENTS .....</b>	<b>1</b>
<b>1 OVERVIEW .....</b>	<b>1</b>
1.1 About this document .....	1
1.2 Requirements.....	1
<b>2 INSTALLATION ON WINDOWS XP .....</b>	<b>2</b>
<b>3 INSTALLATION ON WINDOWS 2000.....</b>	<b>11</b>

## 1 OVERVIEW

### 1.1 *About this document*

This documentation describes the manual installation of the CeUsb2 software step by step for Windows 2000 and XP operating systems. This document can be updated in the near future, since CeUsb2 software is being adopted for the other operating systems. Also, an installation executable for CeUsb2 software is being prepared, therefore this document is subject to be replaced with another one, which describes the step by step usage of this installation program.

### 1.2 *Requirements*

Currently, CeUsb2 installation minimum requirements are:

- § Windows 2000 or Windows XP operating systems.
- § Pentium 266 MHz CPU
- § 16 Mbytes of RAM
- § 10 Mbytes of hard disk space

Since CeUsb2 uses the enhanced data transfer features of USB2.0 protocol, it might be better to use a faster CPU and larger RAM.

## 2 INSTALLATION ON WINDOWS XP

### Step 1

Copy the whole CeUsb2 directory from distribution CD to your hard disk.

### Step 2

Plug your CeUsb2 board to an empty USB 2.0 connector through an USB 2.0 compatible cable.

### Step 3

Since CeUsb2 boards are Plug and Play (P&P) compatible, they will be recognized by the operating system automatically. The *Found New Hardware Wizard* dialog will pop-up and will warn you about an unknown USB device as shown in figure 2.1. Check the radio button *Install from a list or specific location (Advanced)* and click *Next*.



Figure 2.1 – Found New Hardware wizard, page 1.

### Step 4

In the second page of the *Found New Hardware Wizard* dialog select *Search for the best driver in these locations* radio button and check only the *Include this location in the search* check box (don't check the other one).

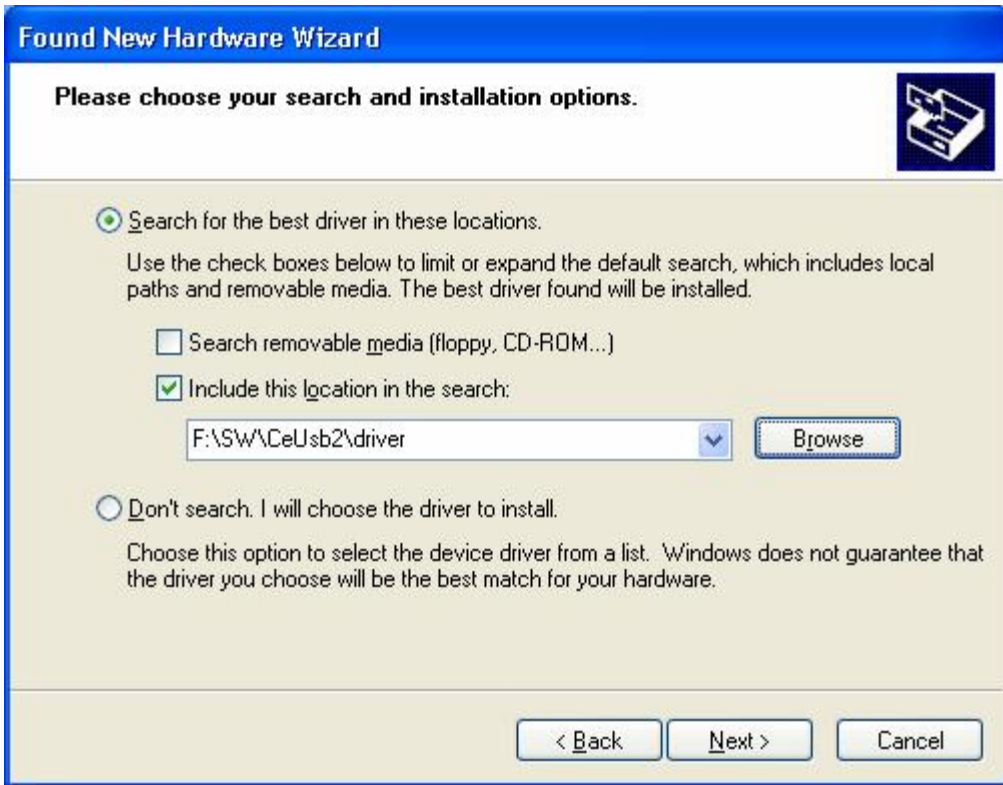


Figure 2.2 – Found New Hardware Wizard, page 2.



Figure 2.3 – Browse for Folder dialog.

You have to show the installation program the directory which includes CeUsb2 drivers, firmwares and installation information file (CeUsb2.inf). For this reason

click Browse button and select the directory from the *Browse for Folder* dialog (Figure 2.3) as CeUsb2\driver.

Click *OK* on *Browse for Folder* dialog and *Next* on *Found New Hardware Wizard* dialog.

### Step 5

Installation program will process the directory and find the CeUsb2 loader driver first. If you come up with any warnings click *Continue* to proceed the installation. It will copy necessary as shown in Figure 2.4.

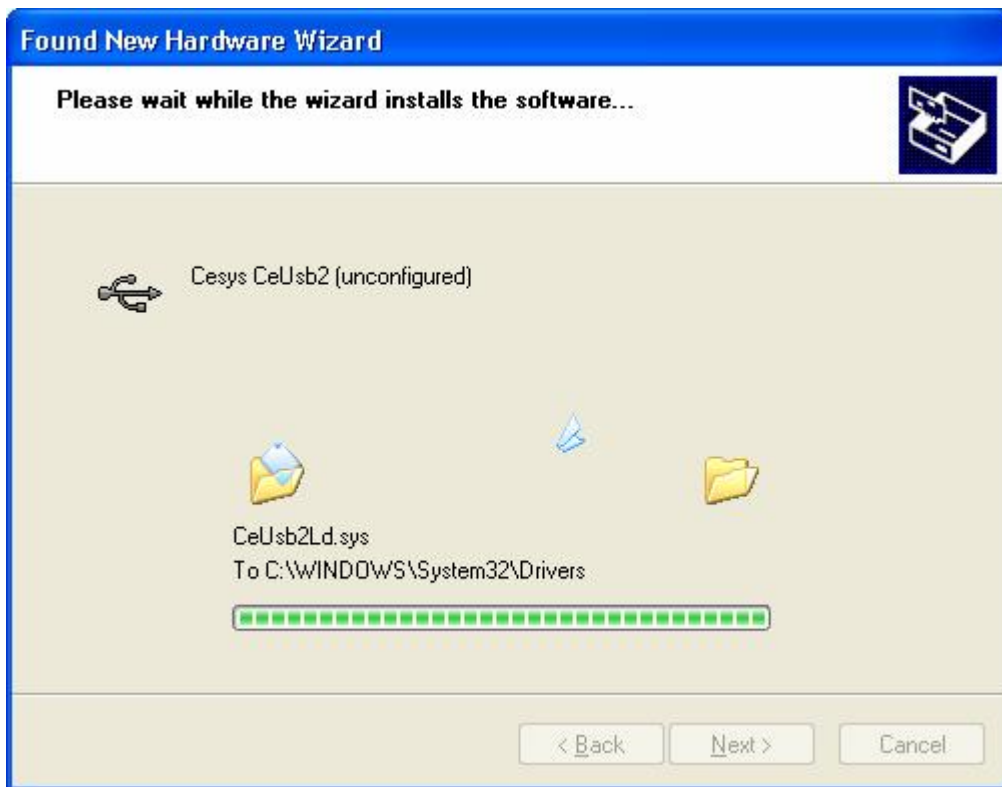


Figure 2.4 – Installation program copies the CeUsb2 files.

### Step 6

After all files are copied and the driver is installed successfully, you will come up with the last page of the installation wizard (Figure 2.5).



Figure 2.5 – Found New Hardware Wizard last page.

Up to this point unconfigured state driver, Cesys CeUsb2 (unconfigured) is installed. This driver initializes your hardware and downloads the necessary firmware files. Later it disconnects and reconnects the hardware from the USB bus and triggers the system to download the main driver of CeUsb2 (CeUsb2.sys). Therefore the steps up to now will be repeated once more for the second driver.

Click *Finish* to proceed.

### Step 7

The *Found New Hardware Wizard* dialog will pop-up again (Figure 2.6) prompting that it found Cesys CeUsb2 Version 1.0. This is the CeUsb2 main driver. Check the radio button *Install from a list or specific location (Advanced)* and click *Next*.



Figure 2.6 – Found New Hardware wizard, page 1.

### Step 8

In the second page of the *Found New Hardware Wizard* dialog (Figure 2.7) select *Search for the best driver in these locations* radio button and check only the *Include this location in the search* check box (don't check the other one).

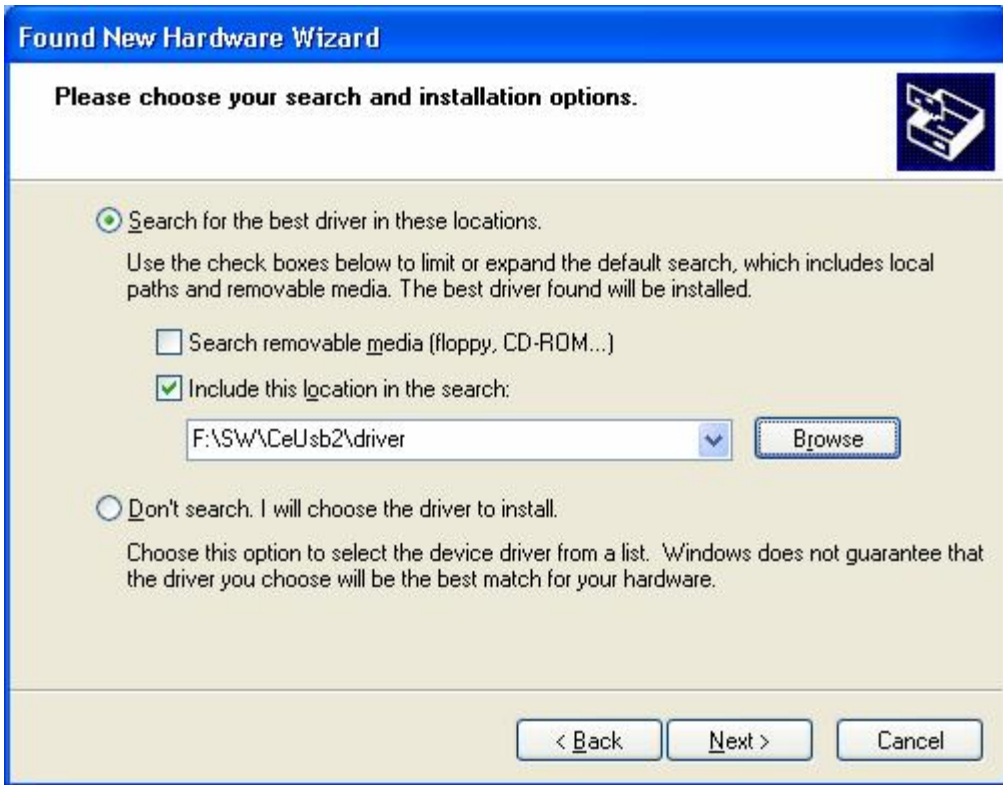


Figure 2.7 – Found New Hardware Wizard, page 2.



Figure 2.8 – Browse for Folder dialog.

You have to show the installation program the directory which includes CeUsb2 driver and installation information file (CeUsb2.inf). For this reason click Browse button and select the directory from the *Browse for Folder* dialog (Figure 2.8) as CeUsb2\driver.

Click *OK* on *Browse for Folder* dialog and *Next* on *Found New Hardware Wizard* dialog.

### Step 9

Installation program will process the directory and find the CeUsb2 loader driver first. If you come up with any warnings click Continue to proceed the installation. It will copy necessary as shown in Figure 2.9.

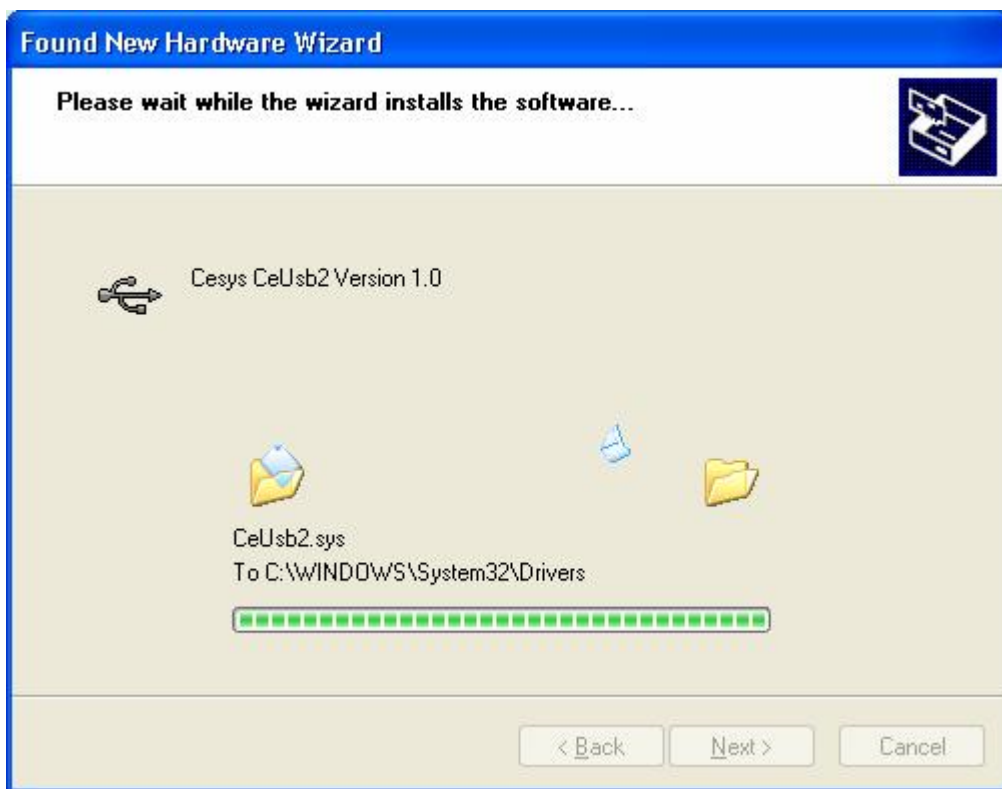


Figure 2.9 – Installation program copies the CeUsb2 files.

### Step 10

After all files are copied and the driver is installed successfully, you will come up with the last page of the installation wizard (Figure 2.10).



Figure 2.10 – Found New Hardware Wizard last page.

Click *Finish* to finish the driver installation process.

### Step 11

To verify that the drivers are installed correctly, go to *Control Panel* applet and click on the *System* icon. Select the *Hardware* tab and click on the *Device Manager* button on this tab. *Device Manager* program of Windows XP will run.

From the device tree view expand the *Universal Serial Bus controllers* field as shown in figure 2.11. You should see an entry for CeUsb2 as *Cesys CeUsb2 Version 1.0*.



Figure 2.11 – Windows XP Device Manager.

### Step 12

CeUsb2 drivers are installed and ready to communicate with the user mode APIs and programs. CeUsb2 directory which you copied on your hard disk includes a diagnostic program, CeUsb2Diag.exe, in the CeUsb2\bin directory. Run this program and test your board with the help of the program's help document.

## 3 INSTALLATION ON WINDOWS 2000

### Step 1

Copy the whole CeUsb2 directory from distribution CD to your hard disk.

### Step 2

Plug your CeUsb2 board to an empty USB 2.0 connector through an USB 2.0 compatible cable.

### Step 3

Since CeUsb2 boards are Plug and Play (P&P) compatible, they will be recognized by the operating system automatically. The *Found New Hardware Wizard* dialog will pop-up and will warn you about an unknown USB device as shown in figure 3.1. Just click *Next*.



Figure 3.1 – Found New Hardware wizard, page 1.

#### Step 4

In the second page of the *Found New Hardware Wizard* dialog (Figure 3.2) select *Search for a suitable driver for my device (recommended)* and press Next.



Figure 3.2 – Found New Hardware Wizard, page 2.

#### Step 5

In the third page of the *Found New Hardware Wizard* dialog (Figure 3.3) check only the *Specify a location* check box and press Next. Driver installation wizard than a dialog which you can select the folder which contains CeUsb2 driver installation files (Figure 3.4).

Click Browse button and select the directory as {CeUsb2 Installation path}\CeUsb2\driver, and click on OK.



Figure 3.3 – Found New Hardware Wizard, page 3.



Figure 3.4 – Found New Hardware Wizard, browse for folder dialog.

## Step 6

If the installation wizard can find the necessary files for installation, then it will show the 4<sup>th</sup> page of the wizard as seen in figure 3.5.



Figure 3.5 – Found New Hardware Wizard, page 4.

## Step 7

After all files are copied and the driver is installed successfully, you will come up with the last page of the installation wizard (Figure 3.6).



*Figure 3.6 – Found New Hardware Wizard last page.*

Up to this point unconfigured state driver, Cesys CeUsb2 (unconfigured) is installed. This driver initializes your hardware and downloads the necessary firmware files. Later it disconnects and reconnects the hardware from the USB bus and triggers the system to download the main driver of CeUsb2 (CeUsb2.sys). If the system asks you the location of the driver files once more, show the same directory as you did in Step 5.

Click *Finish* to finish the installation.